

Company: Power Meter (FWD PWR)

Participants: SSPA ON4KHG 16/06/2014

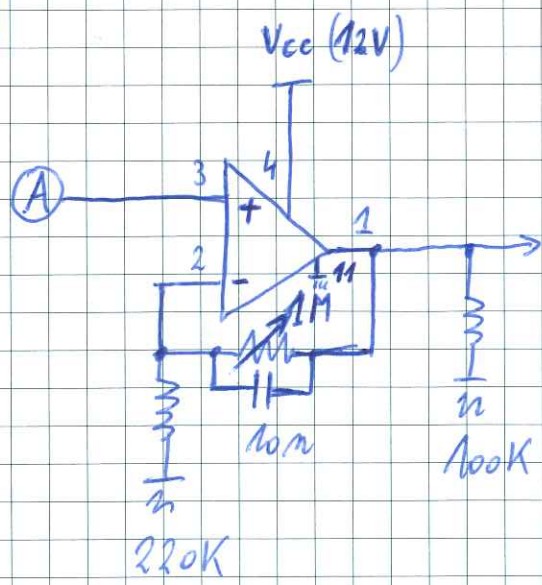
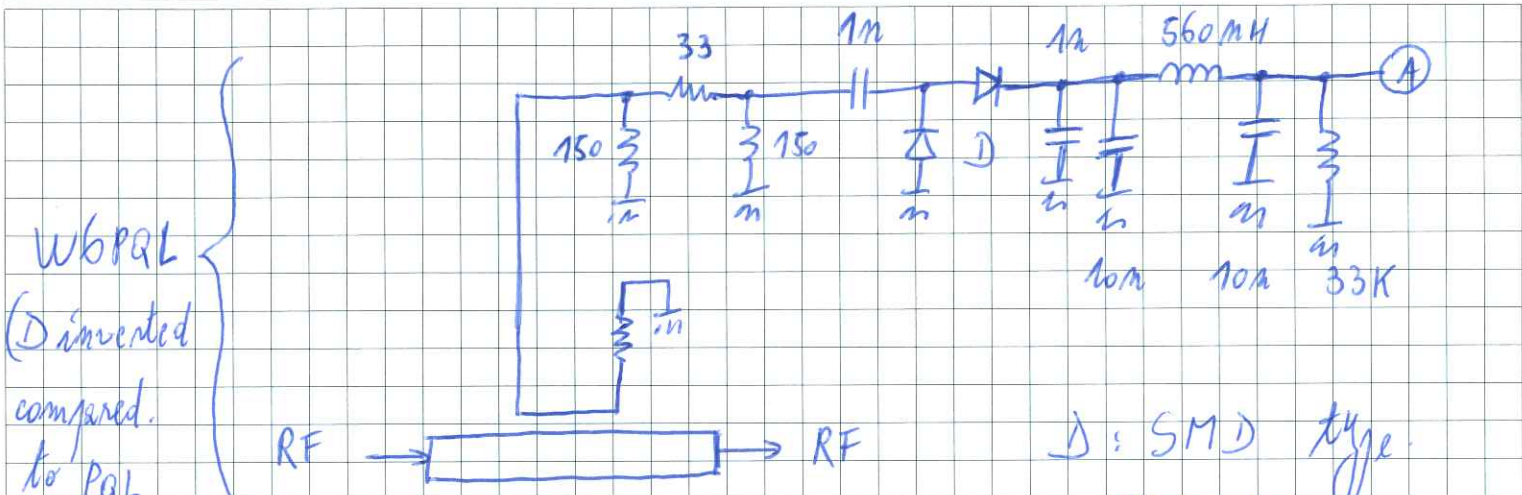
Subject:

Date: / /

By:

Place:

Technical Hot Line: +32-2-5006789



To Arduino UNO (A5)

- Power supply OPAMP.
- 4: Vcc (12V)
- 11: $\frac{1}{n}$

Adjust $\frac{1}{n}$ to get around 4V @ 600W (or more) on Arduino input A5

OP. AMP = LM324 (not another type, as the 324 allows to use single rail supply voltage)